

Meeting Minutes



Architecture Engineering Planning Interiors

1401 Lawrence Street, Suite 1000
Denver, CO 80202

Meeting Date Wednesday March 27 2019

To Thompson School District | DAG members

From DLR Group | Mayraj Peer – Project Manager

Location Thompson School District – Administration Building

Project CTEC + Ferguson High School

Project No. 37-19231-00

Attendees **DAG & TSD:** | Tammie Knauer | Kristin Battige | Carol Hetzel | Darrell Phelps | Steve Moos | Lillian Adorjan | Doug Rutledge | Theo Robison | Alli Cox | Kristi Briles | Ali Ham | Derek Brown | Mike Pintaric | Charles Fielder | Wayne Schleiger | Jason Germain | Patricia Karspeck | Michael Keen
TSD Board: Dave Levy (Director Board of Education) | Jeff Swanty
DLR: Greg Cromer | Mayraj Peer
JHL Constructors: Brad Schmahl |

Purpose Design Advisory Group Meeting (DAG Meeting-01)

Minutes

Action

1. Tammie Knauer introduced the project and talked about the overall scope of the project. Scope includes some major maintenance related work as well
2. Greg Cromer talked about the role of the DAG as seen from the Design Team's side. The design team will look at the DAG to be the "voice of the community" as well as advocates of the project to the community. The DAG meeting schedule was also shared and is attached as part of these meeting minutes
3. The design team provided an overview of the project intention. The overall construction budget is 14 million dollars. The overall scope is broken up in 3 parts and they are as follows
 - ✓ Major Maintenance at Van Buren Elem .- \$1.8 million
 - ✓ Allowance for Remodel of Van Buren Elem - \$4.2 million
 - ✓ New Addition - \$8.0 millionNote: There was an error in the numbers delineated on the hand out presented at the meeting.
4. An Program overview of Ferguson HS and Ferguson campus was provided by Jason Germain (Principal Ferguson High School)

5. Steve Moos (Thompson School District CTE Coordinator) provided an overview of the Career and Technical Education Programs that are being currently targeted to be included as part of this project. The process of determining the CTE programs is still on going.
6. Dave Levy (Thompson School District Board Director) commented that the final CTE programs will need board approval prior to moving forward.
7. DLR presented the site as well as the neighborhood context.
8. Patricia Karspeck one of the community members commented that the new design needs to be sensitive to the neighborhood. Landscape needs be considered as an important design element. City of Loveland landscape requirements need to be reviewed.
9. DLR orchestrated a tabletop exercise and asked the DAG to provide Guiding Principles for the Programs and Campus. 5 groups were created and asked to provide input on
 - ✓ Brand/Identity of Campus
 - ✓ Student Experience
 - ✓ Alternative High School Education
 - ✓ Career Technical Education
 - ✓ Industry Partnerships
 - ✓ Community Value
10. The beliefs and values expressed by the group as part of the tabletop exercise have been captured in a separate document and attached as part of these meeting minutes.
11. The next DAT meeting has been rescheduled for Wednesday April 10 2019 at 3:30 pm

End of Meeting Minutes

The above serves to document our understanding of items discussed. Please advise us in writing within seven (7) days of receipt if corrections are required



CAREER TECHNICAL EDUCATION CENTER + FERGUSON HS – GUIDING PRINCIPLES

Group 1 - Student Experience

- Scheduled Lab/Online
 - Improve & Keep!
 - Improve Tech!
- Straight to a job – not needing more training.
- Collaboration – like alone time, but FFE, ‘feel’ that encourages/allows for collaboration
- Furniture – Flexible & varied (space & furniture)
- Mix of ‘FUN’ space & ‘focused’/serious space
- LOTS – student input (CTE & Ferguson Sides)
- SVVSD – small classes – BAD
- Inside/Outside options to learn
 - Consider maintenance
 - Courtyard – shared for
 - Lunch
 - Learning
- Multipurpose
 - Consider-
 - Smoking area due to demographics/reality
 - We know touchy
 - Programs

Community Value

- Kids ON campus – space they WANT to be @
- Parking – critical
- Aesthetics – Pleasing & fits
- Input meetings – good
- Google surveys – good

Group 2 - Brand & Identity of Campus

- Career Ready
- Individual Learning with personal choice
 - Not dumping ground
 - Different approach
- Community Partners
- Adult world ready

Community Value

- Inclusive without being exclusive
 - Doesn't exclude college
 - Balanced
- Can be successful without college

Group 3 - Alternate High School Education (Ferguson)

- Relationships/Community
 - Outside community (Loveland) as well as within FHS
- Equity with other schools – technology, space, etc
- Outdoor rec. space
- Flexible learning accommodations
 - Indoor meeting spaces (assemblies)
 - 1-on-1 spaces
- Separate identity from CTE
 - Positive community image
- Outside community expert relationships
- Bright & secure
 - Better natural light
 - "house" plants
- Welcoming entrance (working lighthouse)

Group 4 - Industry Partners

- Monetary support
- Constant input on curriculum/program
- Local companies
- Dealerships (auto)
 - How to align with future/tech
- Option for kids to intern/apprentice with partners
- Retain business awareness
- Donations of equipment (lead-time)
- Health partnerships (UC Health/Banner)
- Trades – contractor input
- Take advantage of partners that want to participate

Community Value (Define success?)

- Job ready applicants
- Programs might need to adapt- space may need to be flexible
- Long-term partnerships to sustain over time
- Seen as a benefit to community

Group 5 – Career and Technical Education

- Practical application within our existing schools
 - Support of community & business
 - Integration w/ Careerwise program
 - Alternative path/opportunities
 - Make our students the 'best candidate'
 - Exposure
 - Qualifications
 - Soft skills in addition to technical
 - Show up to work on time
 - Work with people
 - Culture of cooperation, collaboration, soft skills are ingrained in culture/curriculum
 - Looking at the future, cutting edge, design
 - Mission/vision, focus- what do we want it to be
-
- Community values/student services for community
 - Auto, culinary, etc
 - Computer tech support

Additional Comments

- Industry Partnership
 - Bring industry to schools
 - Job shadow/apprenticeship
- Construction Trades
 - Bring students at right time
 - Once into post-secondary may be too late
- FHS
 - Bring the family up when you help the students
 - Currently there is a negative mindset about FHS
- Brand Identity
 - Shifting perception of alternative education
- CTE
 - Opportunities w/ existing schools

ONE THING YOU WOULD SHARE TO CHANGE PERCEPTION OF “ALTERNATIVE HIGH SCHOOL”

1. Drop the “alternative” descriptor in the name. They are all HS student, plain and simple.
2. Creating a new culture
3. Engage community with students; in building.
4. Provide alternative career path for non-traditional students.
5. Input, Investments, Involvement
6. Don’t isolate student or over emphasize the difference in programs or school. It a school first.
7. Career Readiness
8. Education of community about contributions of those that learn in a different manner & potential future contributions.
9. Opportunities for the community to see our kids in actions. Space for demonstrations(s) of learning.
10. College and success are not exclusive of each other.
11. Alternative HS is not failed/different student but focusses on individuals.
12. A viable alternative for student wanting to get into a successful career vs. a 4-year college.
13. Be Open with what we done in the school:
 - Programs
 - How we help students
14. Welcoming Space and Openly communicated
 - Often
 - Clearly
 - “fun” + professional
15. Not refer to this school as “alternative” school. Way too many negative connotations. Stick with something like “technical training school” or such.
16. Bringing “outsiders” in so they can interact with what we do.

Career Technical Education Center + Ferguson High School



AGENDA

- **Introductions of Project Team**
- **Role of Design Advisory Group (DAG)**
- **Overview of Project Intention**
 - Van Buren Remodel and Addition
 - Major Maintenance
- **Program Overview**
 - Ferguson High School / Campus Programs
 - CTEC Programs
- **Site Overview**
- **Guiding Principles for Programs and Campus.**
- **Schedule Overview**
- **Next Meetings and expected topics**

Role of Design Advisory Group (DAG)

Role of DAG is to provide input on the development of the design solution within budget and schedule.

- **DAG #1 – Overview + Guiding Principles (3/27)**
- **DAG #2 – Review Conceptual Diagrams and Program (4/10)**
- **DAG #3 – Schematic Design Review (4/24)**
- **DAG #4 – Design Progress Review (5/8)**
- **DAG #5 – Design Development Review (6/5)**

Overview of Project Intention

Van Buren Remodel and Addition:

\$12.2 million

\$ 4.2 million remodel allowance

\$ 8.0 million addition allowance = 23,500 gsf

Major Maintenance:

Van Buren ES	\$1.8 million
Security Upgrades	High impact security upgrades including improved video surveillance, access control, and exterior lighting; door hardware upgrades for fire code compliance and to better support lockdown situations
Asbestos Abatement and Inspection	Abate asbestos throughout building and replace materials removed (flooring, etc.); update inspection records
Roof Replacement	Replace sections of roof that are past due or nearing the end of lifecycle and experience consistent leaks in building despite patching
Fire System Upgrade	Upgrade fire system panel; most of our service calls are for this type of fire panel, which is no longer manufactured. This makes repairs difficult and costly.
Parking lot and Playpad Asphalt Repair and Replacement	Repair/replace parking lot and playpad asphalt for safety and preservation of infrastructure

Program Overview



Ferguson High School / Campus Programs

- E3 Independent Learning
- SWAP – School to Work Alliance Program
- Community Connections
- Thompson Online Campus
- HOPE Program
- First Steps Nursery



Career Technical Education Center Programs

Program Overview

Berthoud HS

Agriculture
 Business
 Catering
 Computer & I.S.
 Construction Trades
 Early Childhood Education
 Fire Science
 Graphic Design
 Interior Design
 Life Skills
 Project Lead the Way
 Video Production



Thompson Valley HS

Agriculture
 Business
 Catering
 Computer & I.S.
 Construction Trades
 Criminal Justice
 Early Childhood Education
 Graphic Design
 Interior Design
 Life Skills
 Manufacturing Technology
 Marketing
 Food Service / Hospitality
 Video Production
 Welding



Loveland HS

Business
 Catering
 Computer & I.S.
 Construction Trades
 Early Childhood Education
 Fashion Design
 Graphic Design
 Interior Design
 Life Skills
 Manufacturing Technology
 Marketing
 Video Production



Mountain View HS

Business
 Catering
 Computer & I.S.
 Construction Trades
 Fashion Design
 Graphic Design
 Interior Design
 Life Skills
 Marketing
 Project Lead the Way
 Video Production



Aviation **N**
 Auto **EXP**
 Business - Entrepreneurship **ENH**
 Accounting **ENH**

Comp science - Cyber Security. **ENH**
 Construction specific trades **ENH**
 Education **EXP**
 Engineering/robotics **EXP**

Healthcare **N**
 Hospitality/tourism **EXP**
 Manufacturing **EXP**
 Power/energy **N**

Modern media **ENH**
 Welding **EXP**

CTEC

EXP = Expansion Program within District

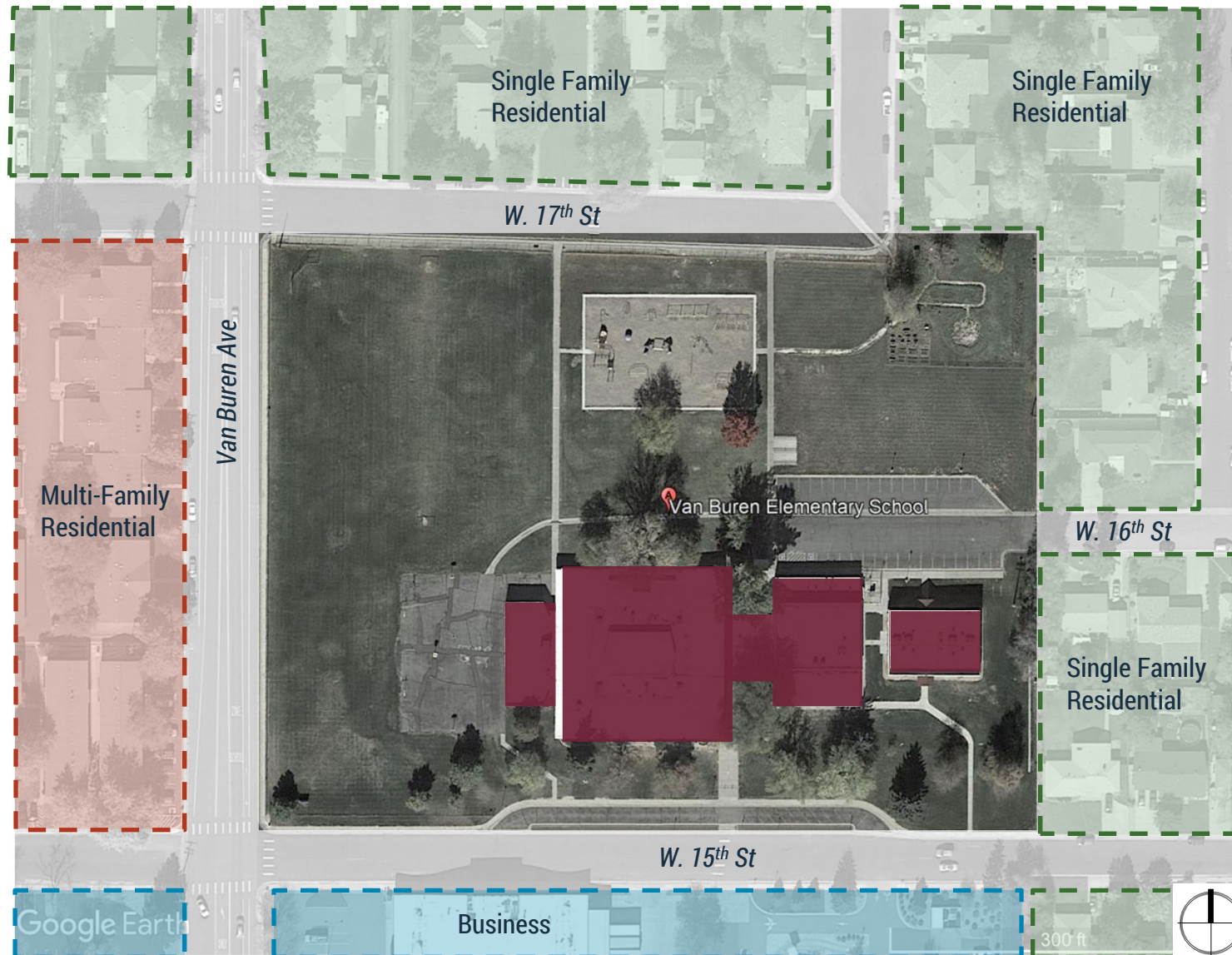
N = New Program to District

ENH = Enhancement to Existing Program

Welding + Construction Trades
 Automotive (Service Repair)
 Health Sciences (CAN)
 STEM (Computer Sci, Robotics, Engineering and Adv. Manuf.)

Business + Marketing
 Education (Teacher Cadet)
 Culinary (Pro Start)

Site Overview



Guiding Principles for Programs and Campus

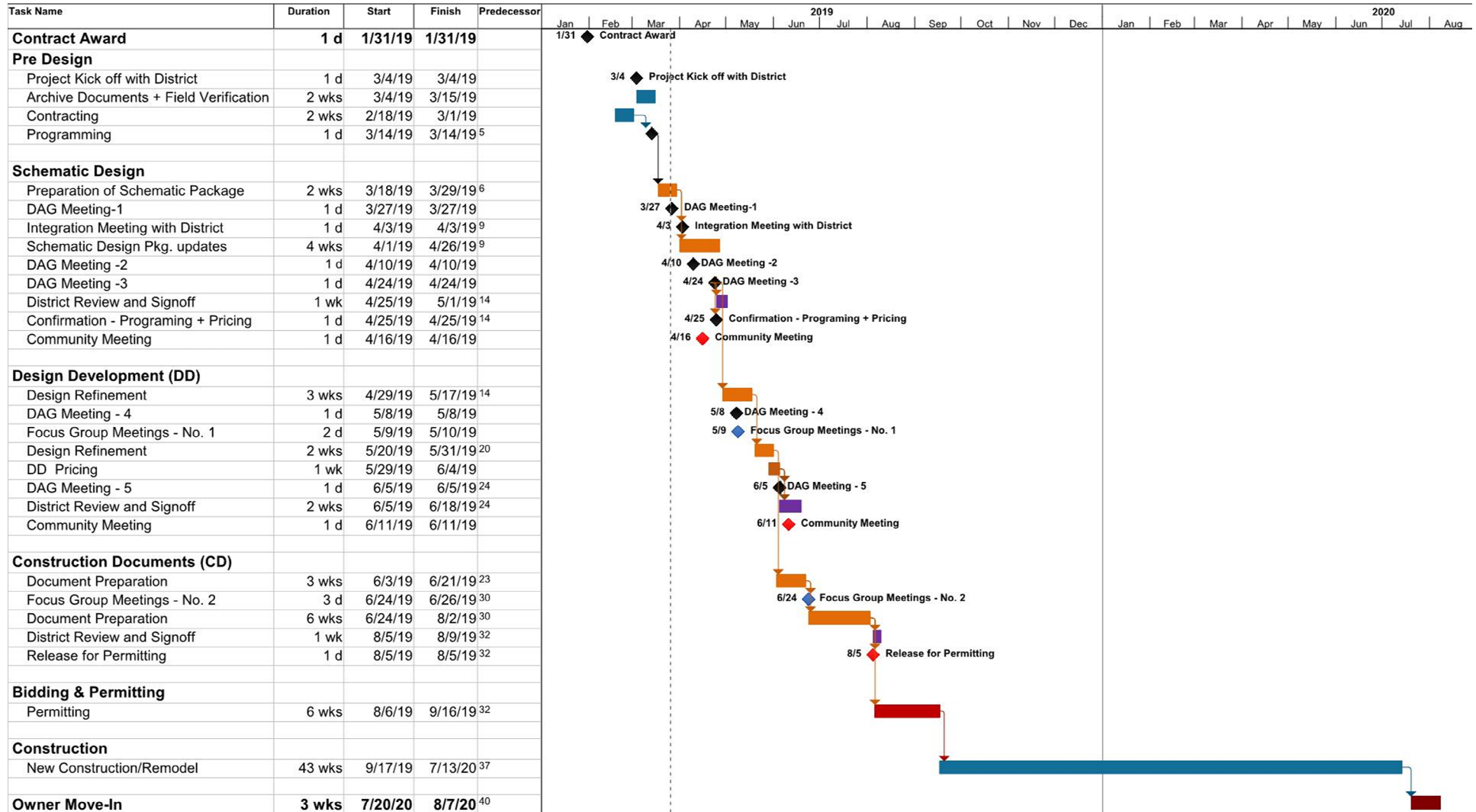
Guiding principles

A broad philosophy that encompass your beliefs and values of the community, that guides this project development. They capture a common belief of the priorities of the project.

- ✓ **Brand/Identify of Campus**
- ✓ **Student Experience**
- ✓ **Alternative High School Education**
- ✓ **Career Technical Education**
- ✓ **Industry Partnerships**
- ✓ **Community Value**

Schedule Overview

Thompson School District CTE + Ferguson HS Project Tue 3/26/19



prepared by DLR Group

Next Meetings and Expected Topics

M / O Project Kick-off - Date TBD

*Building Program Refinement
Development of Conceptual Layout*

Next DAG meeting is April 10, 2019.